

FacilityPro[®] SCADA NG

Data Management, Reporting, and Automation



Viable/Nonviable/Environmental Monitoring

FacilityPro[®] software provides the interface, supervisory control, data management, and reporting functionality for an environmental monitoring system. FacilityPro's ability to manage viable, nonviable, and environmental data through a common system improves the efficiency of production operations and quality investigations.

Industrial Automation Architecture

With the FacilityPro industrial automation architecture, the data processing is performed by the Processor while the data management, display, and storage are performed by the software. This design approach increases system reliability and data integrity.

The software platform offers a number of intelligent features including data mapping, alarming, reporting, and recipe-driven sampling. Both also offer client software for remote access and viewing of data.

SCADA NG is built on the GE[®] Proficy[®] iFIX[®] SCADA NG platform and Historian database and provides several additional advanced features.

BENEFITS

- Designed specifically for pharmaceutical environmental monitoring
- Integration and control of viable and non-viable sampling
- High data integrity
- Ultimate efficiency and reduced error
- Simple installation and validation
- Flexible integration

FEATURES

- Map for visual indication of viable, nonviable, and environmental status
- Configurable display
- Alarm notification and e-signature acknowledgement
- Configurable reports including audit, statistics, and trend reports
- Batch identifiers and data filters
- Automation of sample collection, driven by recipes
- Cubic-meter algorithms for nonviable data
- Volume-based or time-based viable sampling
- Remote data viewing and reporting

APPLICATIONS

Monitoring of critical environments including:

- Filling lines
- Isolators and RABS
- Blow-Fill-Seal
- Lyophilizer processes and transfer carts
- Biosafety cabinets and flow hoods
- General cleanroom and facility monitoring



Without measurement there is no control

FacilityPro[®] SCADA NG

Data Management, Reporting, and Automation

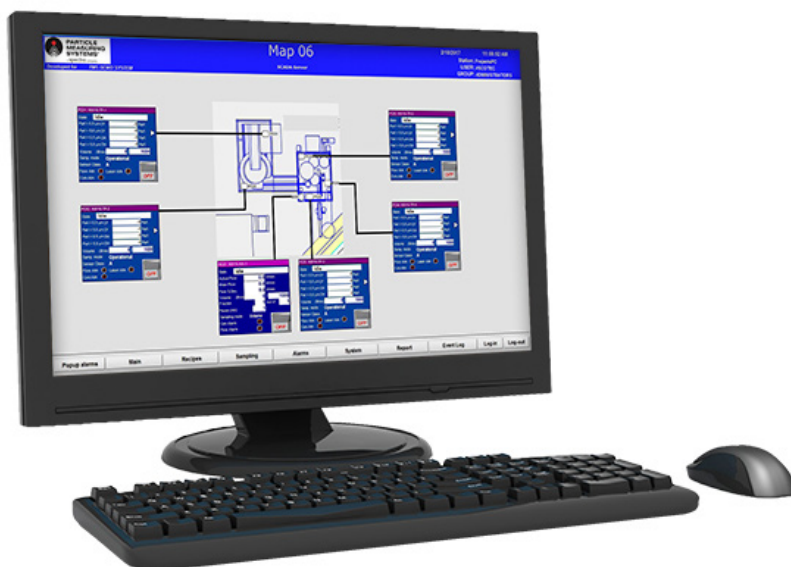
FacilityPro SCADA NG Server Software

The FacilityPro SCADA NG Server software is built on GE's Proficy iFIX SCADA NG platform and Historian database. The SCADA NG Server software supports the following features:

- Map for visual indication of viable, nonviable, and environmental status
- Configurable display
- Alarm notification and e-signature acknowledgement
- Configurable reports including audit, statistics, and trend reports
- Real-time trending of data
- Batch identifiers and data filters
- Automation of sample collection, driven by recipes
- Cubic-meter algorithms for nonviable data
- Volume-based or time-based viable sampling
- Client software for remote viewing and reporting
- 12 interface languages supported
 - Redundant server capability
 - Supports multiple FacilityPro Processors
 - Supports third-party PLC integration
 - Supports SMS and Email-sending software package
 - Supports FacilityPro terminal services, providing remote access to the Server through a web browser or tablet app
 - iOS (iPad[®]) and Android[™] app (works in conjunction with terminal services)

Hardware Specifications

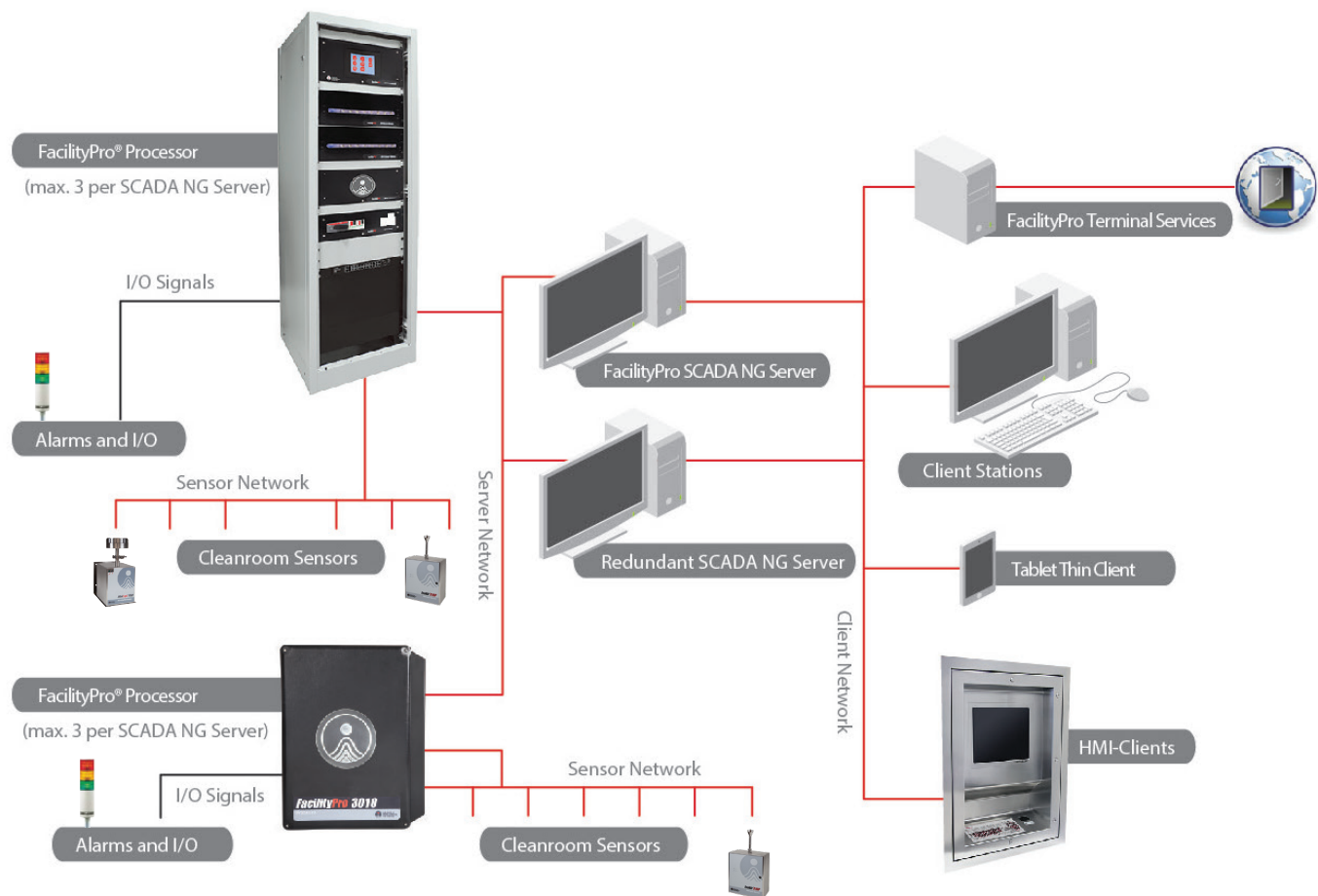
DISPLAY RESOLUTION	Minimum 1920 x 1080
PROCESSOR	Intel [®] Core Processor i5-8500 3.0 GHz 6 Core
OPERATING SYSTEM	Windows [®] Server 2016 Standard 64 bit
OPERATING SYSTEM (CLIENT)	Windows 10 64 bit
IFIX RUNTIME	Version 5.9
DATABASE HISTORIAN	Version 7.0



FacilityPro[®] SCADA NG

Data Management, Reporting, and Automation

Example SCADA System Architecture



The FacilityPro[®] processor provides the central hub for an environmental monitoring system. The processor communicates with cleanroom sensors, including particle and microbial monitors, while buffering data and checking tolerances for alarm activation.



FacilityPro[®] SCADA NG

Data Management, Reporting, and Automation

Feature Comparison

	FacilityPro SMART NG Server	FacilityPro SCADA NG Server
Viable / nonviable / environmental integration	Y	Y
21 CFR Part 11 compliant	Y	Y
Facility map for data and status visualization	Y	Y
Configurable display	Y	Y
Alarm notification and e-signatures	Y	Y
Configurable reports including audit, statistics, and trend reports	Y	Y
Batch identifiers and data filters	Y	Y
Automated sample collection, recipe-driven	Y	Y
Cubic meter algorithms for nonviable data	Y	Y
Volume-based or time-based viable sampling	Y	Y
Client software for remote viewing and reports	Y (2 or 5)	Y (25 max)
Maximum number of FacilityPro Processors	2	3
Built on GE Proficy iFIX SCADA and Historian DB	-	Y
Redundant servers	-	Y
Third-party PLC support	-	Y
Email software support	-	Y
FacilityPro Terminal Services support	-	Y
iOS (iPad[®]) and Android[™] app (works in conjunction with terminal services)	-	Y
Language support	English, Spanish, German, French, Italian, Portuguese, Swedish, Russian, Chinese (simplified and traditional), Korean, Japanese	

- : not supported y : supported

FacilityPro[®] is a registered trademark of Particle Measuring Systems, Inc. GE[®], iFIX[®] and Proficy[®] are all trademarks of General Electric. iPad is a registered trademark of Apple, Inc. iOS[®] is a registered trademark of Cisco. Android[™] is a trademark of Google, Inc. Windows[®] is a registered trademark of Microsoft Corporation. All other trademarks are the property of their respective owners. Particle Measuring Systems, Inc. reserves the right to change specifications without notice.
© 2019 Particle Measuring Systems, Inc. All rights reserved. 2019.03

HEADQUARTERS

5475 Airport Blvd
Boulder, Colorado 80301 USA
T: +1 303 443 7100, +1 800 238 1801

Instrument Service & Support
T: +1 800 557 6363

Customer Response Center
T: +1 877 475 3317
E: info@pmeasuring.com



GLOBAL OFFICES

AUSTRIA
T: +43 512 390 500
E: pmsaustria@pmeasuring.com

BENELUX
T: +32 10 23 71 56
E: pmsbelgium@pmeasuring.com

BRAZIL
T: +55 11 5188 8227
E: pmsbrazil@pmeasuring.com

CHINA
T: +86 21 6113 3600
E: pmschina@pmeasuring.com

FRANCE
T: 33(0)1 60 10 32 96
E: pmsfrance@pmeasuring.com

GERMANY
T: +49 6151 6671 632
E: pmsgermany@pmeasuring.com

ITALY
T: +39 06 9053 0130
E: pmsrl@pmeasuring.com

JAPAN
T: +81 3 5298 8175
E: pmsjapan@pmeasuring.com

KOREA
T: +82 31 286 5790
E: pmskorea@pmeasuring.com

MEXICO
T: +52 55 2271 5106
E: pmsmexico@pmeasuring.com

NORDIC
T: +45 707 028 55
E: pmsnordic@pmeasuring.com

PUERTO RICO
T: +1 787 718 9096
E: pmspuertorico@pmeasuring.com

SINGAPORE
T: +65 6496 0330
E: pmsingapore@pmeasuring.com

SWITZERLAND
T: +41 71 987 01 01
E: pmsswitzerland@pmeasuring.com

TAIWAN
T: 886-3-5525300 Ext: 301
E: pms taiwan@pmeasuring.com